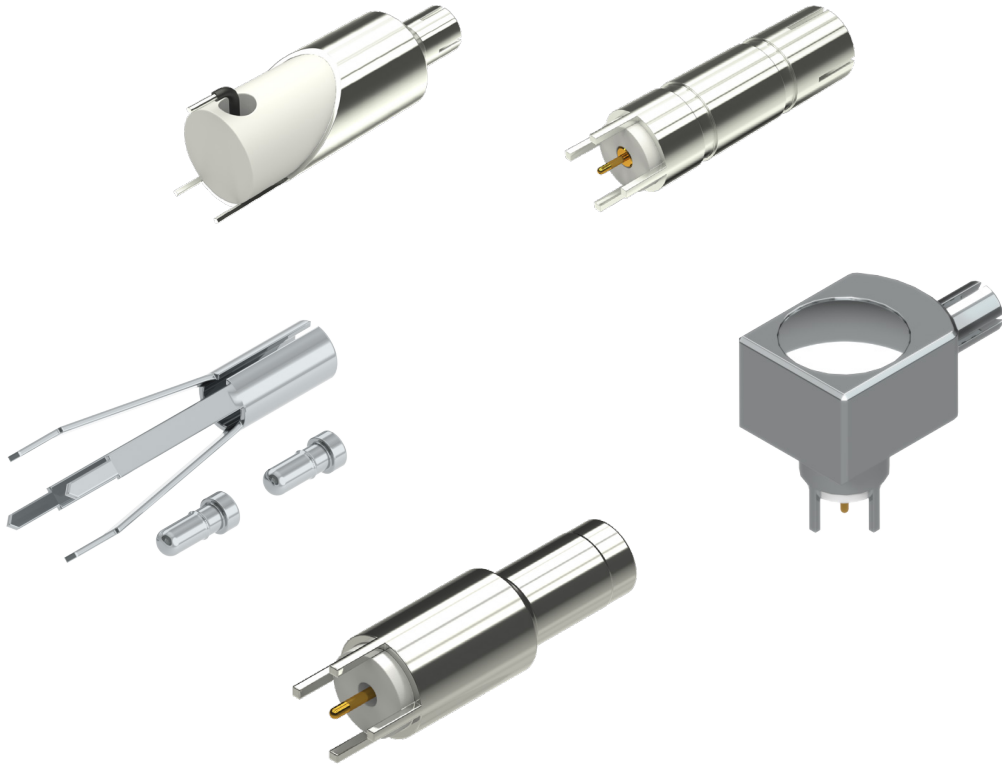




**Probing Solutions.
Made in Germany.**

EN



PCB ADAPTER

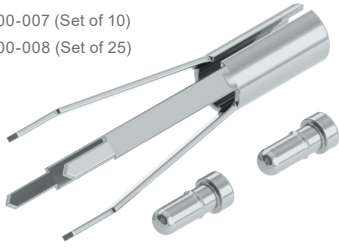
Datasheet



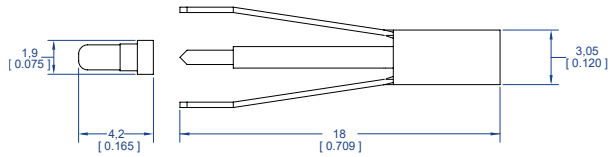
PCB ADAPTER 2.5

Order Number:

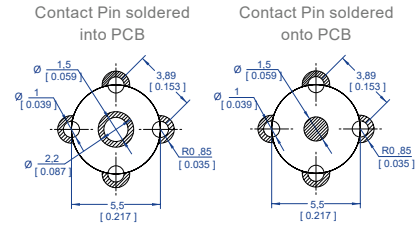
891-700-007 (Set of 10)
891-700-008 (Set of 25)



Materials: Spring steel, Nickel-plated



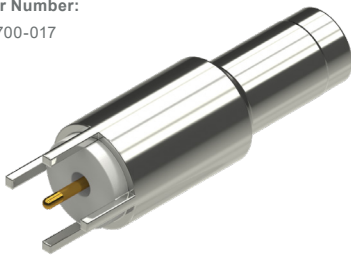
*) Units in millimeters [inch]



PCB ADAPTER 2.5 HQ

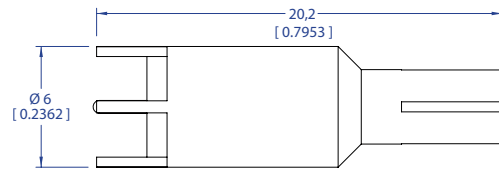
Order Number:

890-700-017



This Accessory is useable with spring-loaded probe tips only.

Materials: Shell: Brass alloy, nickel-plated
Socket: Brass alloy, gold-plated
Insulator: PTFE



*) Units in millimeters [inch]

Rating Accessories

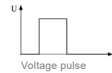
PCB Adapter 2.5 HQ / PCB Adapter 2.5 90° HQ

Maximum Rated Input Voltages, No Measurement Category, not in CAT II, III, IV (1)

Pollution Degree: 2
No Measurement Category: 250V, 1600V peak

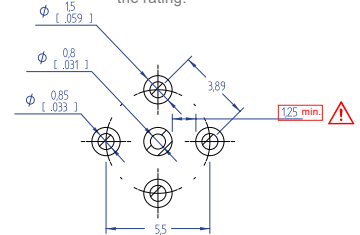
Maximum Pulse Rating, No Measurement Category, not in CAT II, III, IV (1)

Upulse (2) = 1600V (Step 0V to 1600V)



Drilling / soldering template

The minimum distance between all solder pads of 1.25 mm (see adjacent template) must not be undercut under any circumstances. Undercutting this distance will void the rating.



PCB ADAPTER 2.5 90° HQ

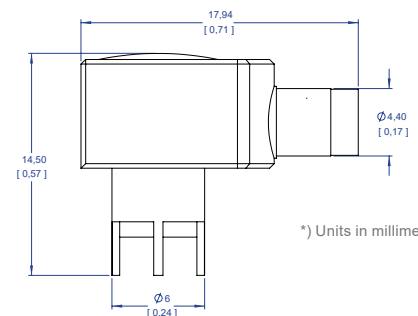
Order Number:

890-700-027



This Accessory is useable with spring-loaded probe tips only.

Materials: Shell: Brass alloy, nickel-plated
Socket: Brass alloy, gold-plated
Insulator: PTFE



*) Units in millimeters [inch]

Rating Accessories

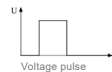
PCB Adapter 2.5 HQ / PCB Adapter 2.5 90° HQ

Maximum Rated Input Voltages, No Measurement Category, not in CAT II, III, IV (1)

Pollution Degree: 2
No Measurement Category: 250V, 1600V peak

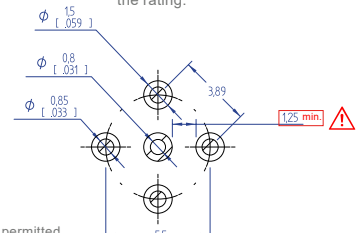
Maximum Pulse Rating, No Measurement Category, not in CAT II, III, IV (1)

Upulse (2) = 1600V (Step 0V to 1600V)



Drilling / soldering template

The minimum distance between all solder pads of 1.25mm (see adjacent template) must not be undercut under any circumstances. Undercutting this distance will void the rating.

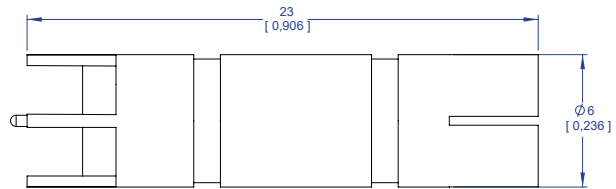


PCB ADAPTER 5.0

Order Number:
890-700-000



Materials: Shell: Brass alloy, nickel-plated
Socket: Brass alloy, gold-plated
Insulator: PTFE



Rating Accessories

*) Units in millimeters [inch]

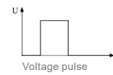
PCB Adapter 5.0

Maximum Rated Input Voltages, No Measurement Category, not in CAT II, III, IV (1)

Pollution Degree: 2
No Measurement Category: 250V, 1600V peak

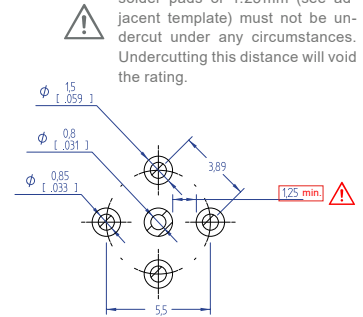
Maximum Pulse Rating, No Measurement Category, not in CAT II, III, IV (1)

Upulse (2) = 1600V (Step 0V to 1600V)



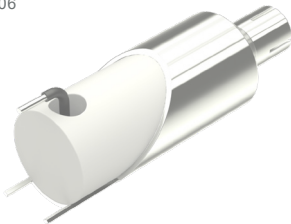
Drilling / soldering template

The minimum distance between all solder pads of 1.25mm (see adjacent template) must not be undercut under any circumstances. Undercutting this distance will void the rating.

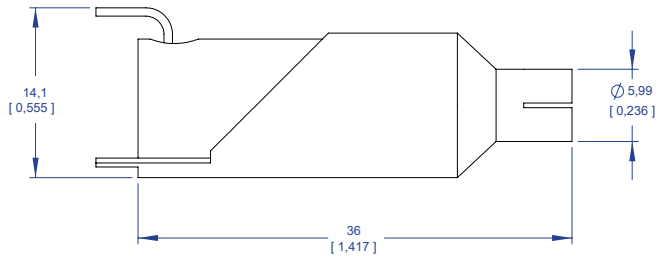


PCB ADAPTER 5.0 L

Order Number:
890-700-006



Materials: Shell: Brass alloy, nickel-plated
Socket: Brass alloy, gold-plated
Insulator: PTFE



*) Units in millimeters [inch]

Rating Accessories

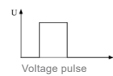
PCB Adapter 5.0-L

Maximum Rated Input Voltages, No Measurement Category, not in CAT II, III, IV (1)

Pollution Degree: 2
No Measurement Category: 2000V, 6000V peak

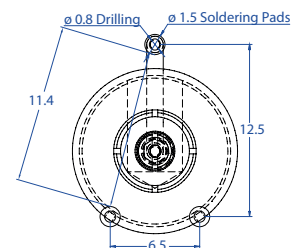
Maximum Pulse Rating, No Measurement Category, not in CAT II, III, IV (1)

Upulse (2) = 6000V (Step 0V to 6000V)



Drilling / Soldering Template

The minimum distance between all solder pads of 11.4mm (see adjacent template) must not be undercut under any circumstances. Undercutting this distance will void the rating.



Manufacturer

PMK Mess- und Kommunikationstechnik GmbH
Koenigsteinerstrasse 98
65812 Bad Soden am Taunus, Germany

Phone: +49 (0) 6196 5927 - 930
Fax: +49 (0) 6196 5927 - 939

Internet: www.pmk.de
E-Mail: sales@pmk.de

Copyright © 2021 PMK GmbH - All rights reserved.

Information in this publication supersedes that in all previously published material.
Specifications are subject to change without notice.